



Trends of Open Home Service Platform Technologies

(H.J. Park)  
(K.R. Park)



OSGi

가

I.

가  
, OS

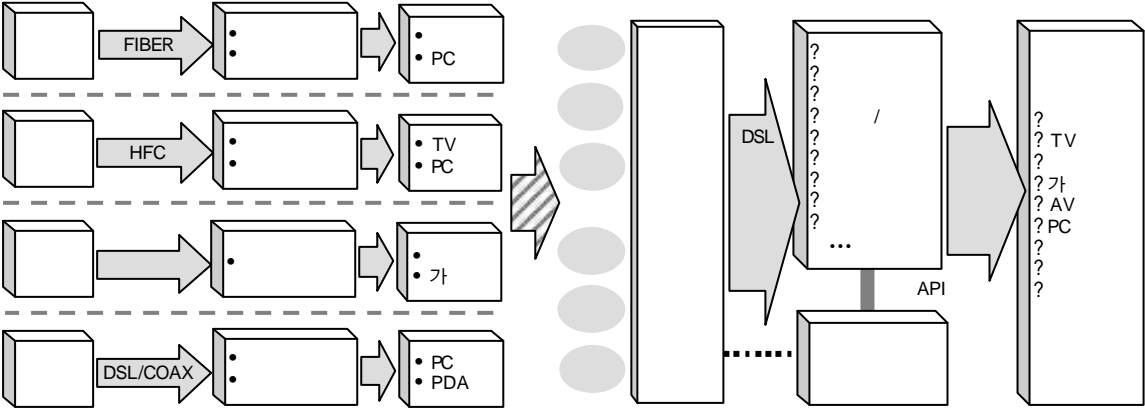
가

가 가

( 1)

가

( )



( 1)

가 . [2].

가 .

OSGi(Open Service Gateway initiative)가

15

가 가 1999 3 1.

[1]. OSGi OS JAR(Java Archive) (bundle) OSGi

가 , , 가

OSGi 가 , 가

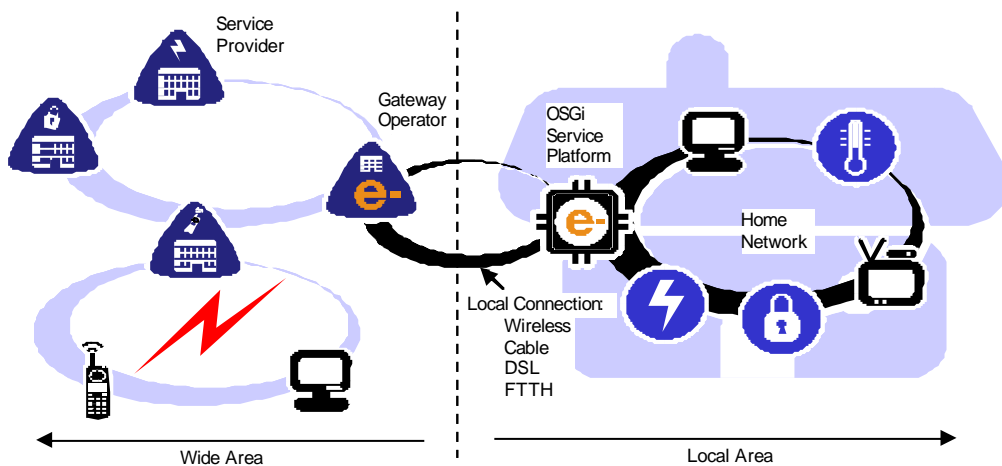
2.

II. 가 가

OSGi WAN(Wide Area Network) API(Application Programming Interface)

( 2)

가 API 가



( 2) OSGi



OSGi

6.

가

3. ( , CPU , OS)

OSGi 2 3 가 .OSGi

가 (admin permission)

가

7.

OSGi

가

가

4.

가

8.

가

OSGi / /

가

9.

OSGi

가

5. Off the Shelf

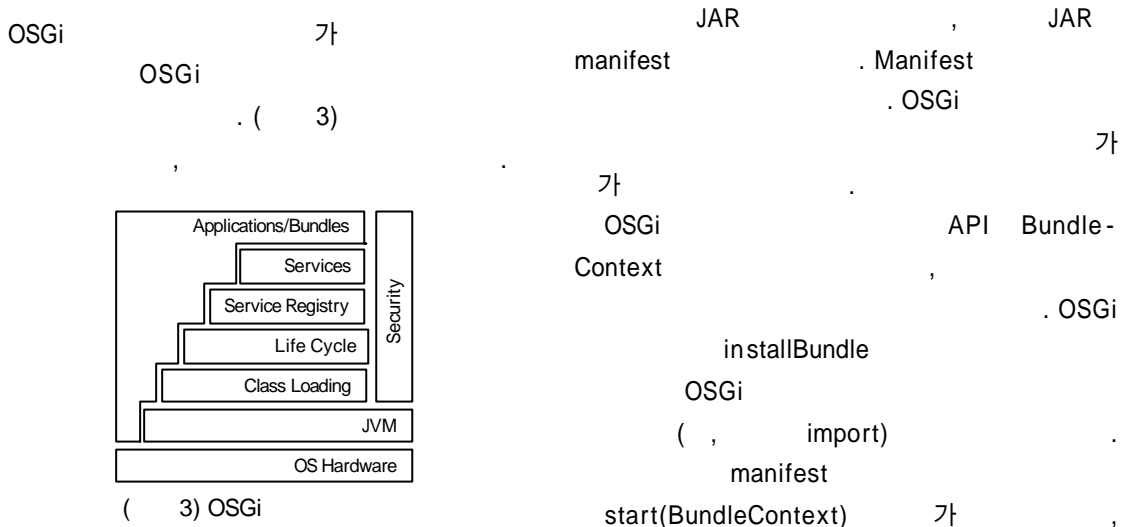
IBM Prosysst, Gatespace OSGi

COTS(Commercial Off the Shelf) OSGi

COTS

가 가

III.



1. 가

OSGi 가 (Java Virtual Machine)  
.NET

2. OSGi

가

가.

) (export/import)

export 가

(backward compatibility) 가

가

URL

URL

2.

OSGi

(permission)

가

- :
- :
- :
- :
- Preference :

가

IV.

3.

2003

OSGi

Release 3

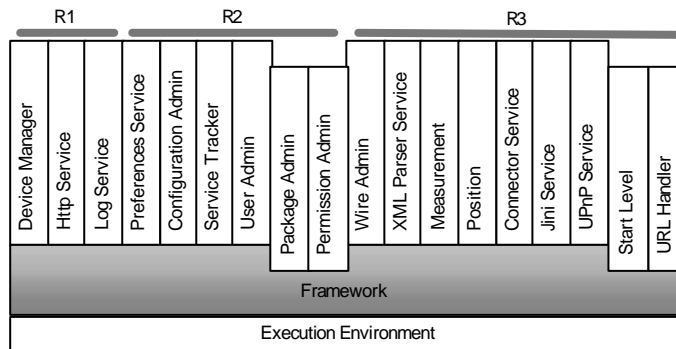
( 4)

- Http : http (servlet)
- UPnP: UPnP

1.

4.

- Wire : ( , )



( 4) OSGi

- XML : XML

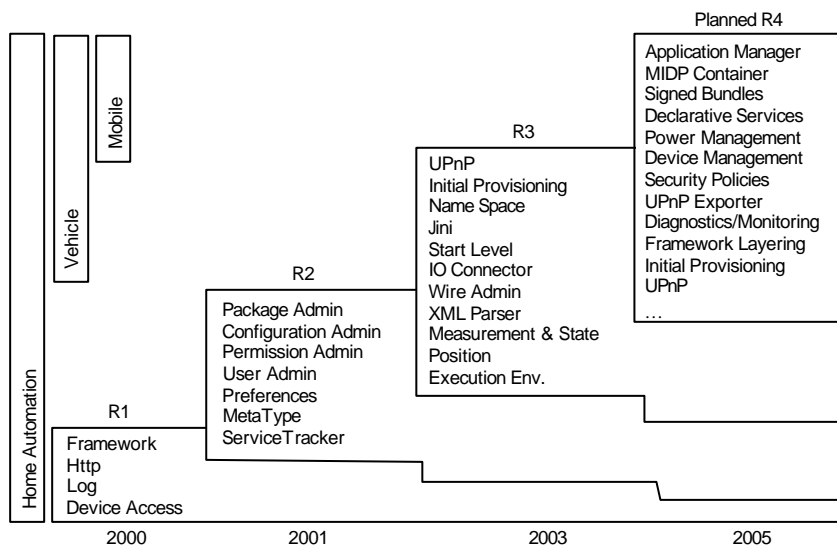
VI.

1.

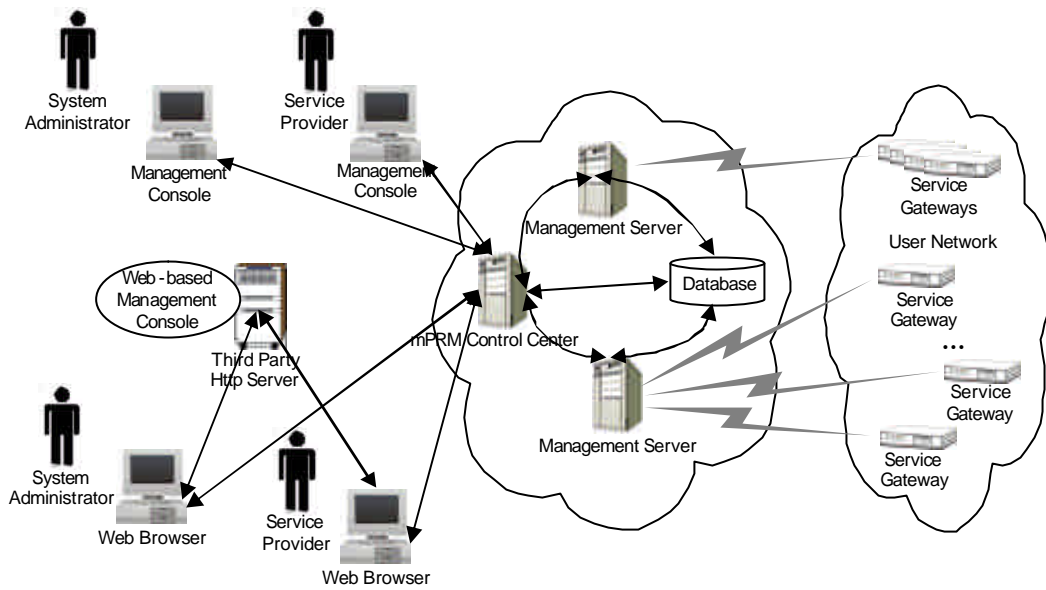
V.

가. Prosys[3]

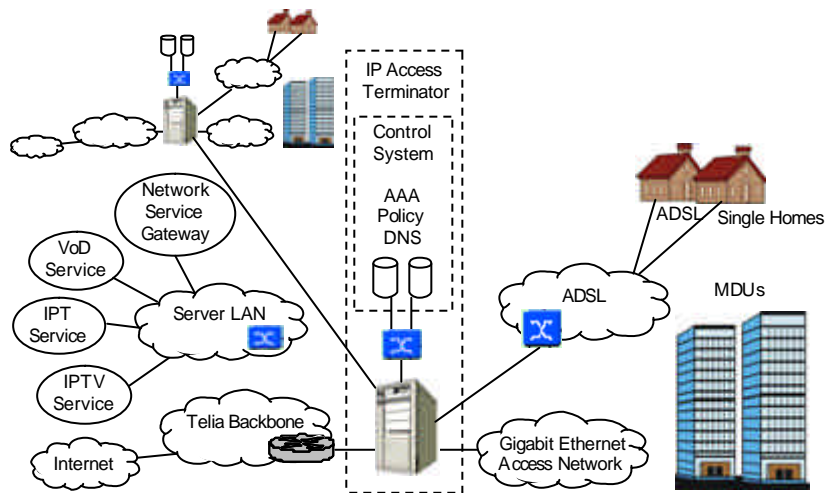
( 5) OSGi 1997  
 2000 5 R1 , 가  
 2003 4 R3 , . OSGi  
 R4 .  
 R4 ,  
 가가 ,  
 . 가 ,  
 .  
 - : Siemens  
 - : (serve@Home) 2003  
 - : mBedded ,  
 mPRM(mPower Remote  
 - : J2EE Manager system)  
 [4]. ( 6) .



( 5) OSGi



( 6) Prosyst



( 7) TeliaSonera 가 LAN

. TeliaSonera[5]

2001 11

OSGi

. IBM

[6].

“No New Boxes”

OSGi

(Service Manage-

ment Framework: SMF)

(Tivoli device

management server)

. ( 7)

[7].

OSGi

SMF 3.5.2  
 websphere studio  
 device developer 가 가  
 2. 가  
 OSGi ETRI,  
 OSGi OSGi  
 OSGi 가 OSGi  
 , 2003 12 Telstra  
 (Broadband ELab Services) 가  
 2003 ETRI KT 6  
 . 2004 . 2007 1  
 가  
 2007 2 가 2003  
 가

VII.

2003 2007  
 , 2  
 1 가

[1] <http://www.osgi.org/>  
 [2] D. Marples and P. Kriens, "The Open Services Gateway Initiative: An Introductory Overview," IEEE Comm. Mag., Dec. 2001, pp.2-6.  
 [3] <http://www.prosyst.com/>  
 [4] D. Valtchev and I. Frankov, "Service Gateway Architecture for a Smart Home," IEEE Comm. Mag., Apr. 2002, pp.126-132.  
 [5] <http://www.teliasonera.com/>  
 [6] B. Horowitz and N. Magnusson, "Telia's Service Delivery Solution for the Home," IEEE Comm. Mag., Apr. 2002, pp.120-125.  
 [7] [http://www-306.ibm.com/software/pervasive/ws\\_ever\\_yplace\\_device\\_manager/](http://www-306.ibm.com/software/pervasive/ws_ever_yplace_device_manager/)